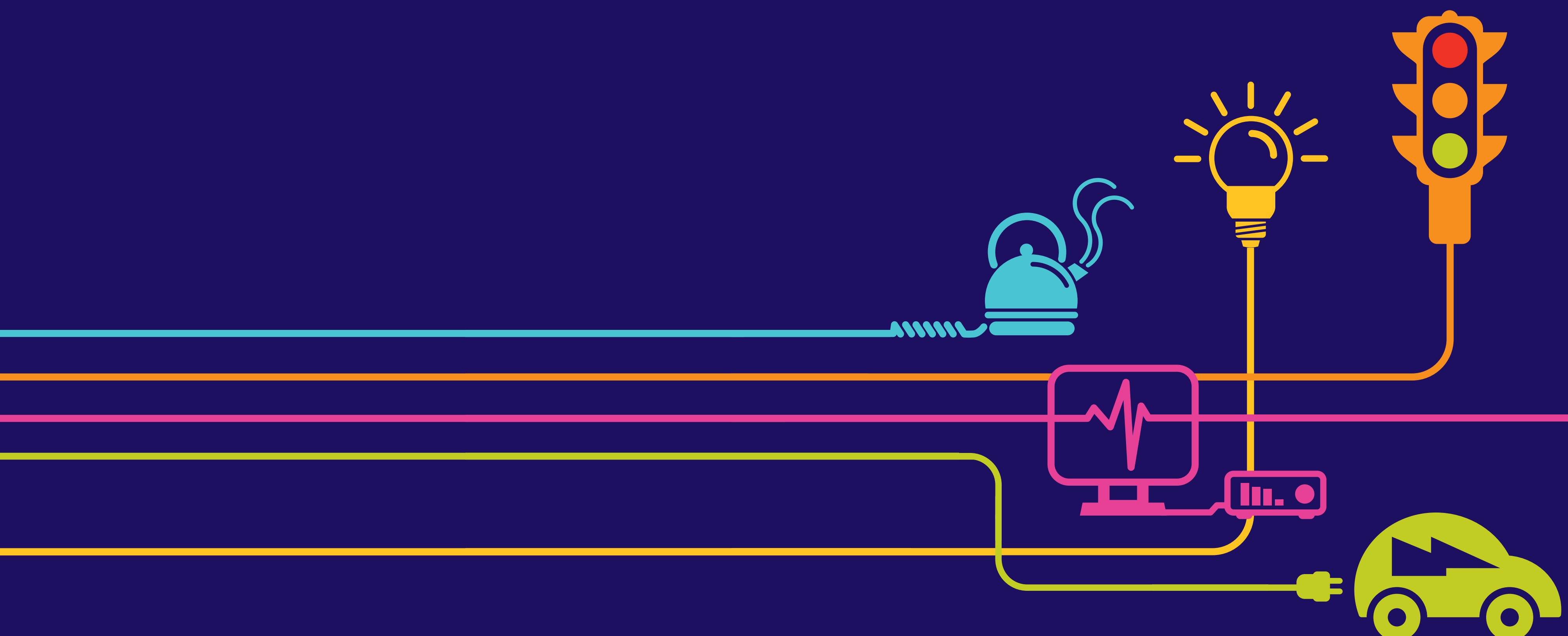


New Verified Photomontages Part 3

Hinkley Point C Connection Project

*Regulation 5(2)(a) of the Infrastructure Planning
(Applications: Prescribed Forms and Procedure)
Regulations 2009*



Hinkley Point C Connection Project

Volume 8.7.3 – New Photomontages (orange highlight indicates the contents of this Volume)

Figure	Title
Volume 8.7.3.1	
8.7.3.1 - 8.7.3.11	Additional Verified Photomontage Viewpoint locations (replaces previously submitted Volume 8.2.25, Appendix 9.24c.1.2)
Volume 8.7.3.2	
8.7.3.12	VPE12 during operation
8.7.3.13	VPG13 during operation
8.7.3.14	VPG14 during operation
8.7.3.15	VPD28 during operation
8.7.3.16	VPD29 during operation
8.7.3.17	VPD30 during operation
Volume 8.7.3.3	
8.7.3.18	VPC17 during operation
8.7.3.19	VPB30 during operation
8.7.3.20	VPB31 during operation
8.7.3.21	VPB32 during operation
8.7.3.22	VPA10 during operation
Volume 8.7.3.4	
8.7.3.23	VPG10 during operation
8.7.3.24	VPG11 during operation
Volume 8.7.3.5	
8.7.3.25	VPD31 during operation and after 15 years
8.7.3.26	VPD33 during operation and after 15 years
8.7.3.27	VPF9 preferred route Option A and alternative route Option B during operation
8.7.3.28	VPD32 during operation
Volume 8.7.3.6	
8.7.3.29	VPF8 during operation
8.7.3.30	VPF10 during operation
8.7.3.31	VPF11 during operation
8.7.3.32	VPF12 during operation
Volume 8.7.3.7	
8.7.3.33	VPG12 during operation



Existing view
Existing view from Mere Bank Road, looking southeast along Mere Bank Scheduled Monument (asset ID SM260) towards the G Route and BW Route with a single pylon visible (Section G)



Anticipated view during operation
Anticipated view of the 400kV overhead line supported by steel lattice pylons with only conductors visible beyond Mere Bank Scheduled Monument (asset ID BH6) during operation (with the G Route removed and tree removal not distinguishable)

Viewing Information

This is a composite image made up of 3 No. 50mm photographs joined together horizontally to form an overall field of view which is wider than that seen in detail by the human eye.

For correct perspective viewing, this image must be viewed at an exact distance of 300mm with one eye whilst curving the image in an exact arc of 80 degrees. This image should only be assessed in the real landscape from the same viewpoint.

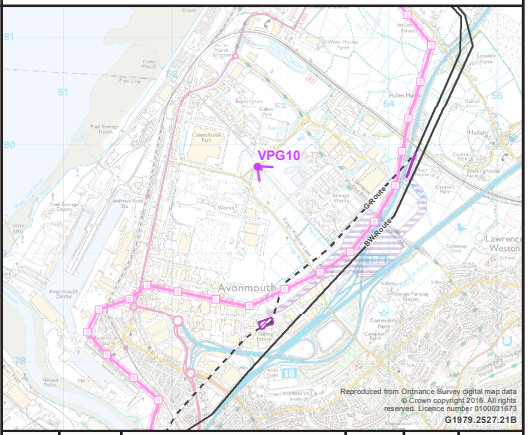

When not in the real landscape in order to provide an accurate representation images should be viewed with one eye by panning across a flat image with the eye remaining at the recommended viewing distance of 300mm from the image.

'This document relates to paragraph 5(2)(q) of the Infrastructure Planning (Applications: prescribed forms and procedure) Regulations 2009'

Light Detection and Ranging (LIDAR) level data typically at 40 points per/m2 and also data at 1m and 2m intervals was used for topographical information.

Steel lattice pylon

- Frame - grey steel material
- Insulator - light blue/grey composite material
- Twin conductor bundle

Date of photograph: 20/02/2015 Lens type:50mm (digital full frame camera)				
Distance to the nearest proposed steel lattice pylon: 1170m OS reference of viewpoint: X= 352787.423 Y= 179807.508				
Direction of view: 133 ^o (south east) Viewpoint height: 9.967m AOD				
Horizontal field of view: 80 ^o Viewing distance approx 300mm at A1				
				
A	19/03/2015	FRWG	AJG	LG NH
ISSUE	DATE	COMMENTS	DRAW	CHKD APPD
Title NATIONAL GRID (HINKLEY POINT C CONNECTION PROJECT) VOLUME 8.7.3 VERIFIED PHOTOMONTAGE VIEWPOINT VPG10				
 <small>National Grid plc, National Technology Park, Glenfield Rd, Leicester, LE3 7BH</small>				
NG INVESTMENT No. 20897	APPLICATION No. EN020001			IN A1
FIGURE No. 8.7.3.23	DRAWING No. IN1979.82.025.001B			SCALE NTS
SHEET 1 OF 1				ISSUE A



Existing view
Existing view from PRoW BCC/18/10, off Kings Weston Lane, looking southeast along Mere Bank Scheduled Monument (asset ID SM260) towards the G Route and BW Route (Section G)



Anticipated view during operation
Anticipated view of the 400kV overhead line supported by steel lattice pylons visible beyond Mere Bank Scheduled Monument (asset ID BH6) during operation (with the G Route removed and tree removal not distinguishable)

Viewing Information

This is a composite image made up of 5 No. 50mm photographs joined together horizontally to form an overall field of view which is wider than that seen in detail by the human eye.

For correct perspective viewing, this image must be viewed at an exact distance of 300mm with one eye whilst curving the image in an exact arc of 120 degrees. This image should only be assessed in the real landscape from the same viewpoint.

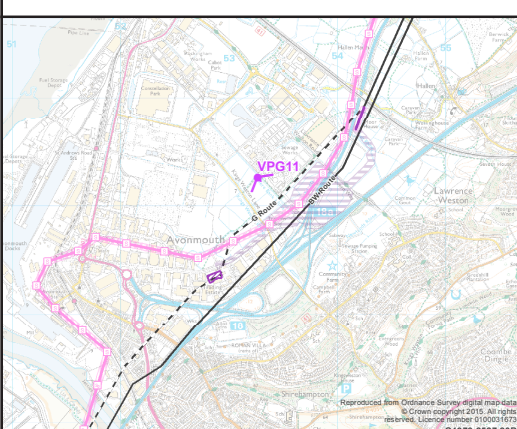

When not in the real landscape in order to provide an accurate representation images should be viewed with one eye by panning across a flat image with the eye remaining at the recommended viewing distance of 300mm from the image.

'This document relates to paragraph 5(2)(q) of the Infrastructure Planning (Applications: prescribed forms and procedure) Regulations 2009'

Light Detection and Ranging (LIDAR) level data typically at 40 points per/m2 and also data at 1m and 2m intervals was used for topographical information.

Steel lattice pylon

- Frame - grey steel material
- Insulator - light blue/grey composite material
- Twin conductor bundle

Date of photograph: 20/02/2015 Lens type:50mm (digital full frame camera)					
Distance to the nearest proposed steel lattice pylon: 457m OS reference of viewpoint: X= 353260.684 Y= 179266.303					
Direction of view: 141° (south east) Viewpoint height: 8.411m AOD					
Horizontal field of view: 120° Viewing distance approx 300mm at A1					
					
A	19/03/2015	FRWG	AJG	LG	NH
ISSUE	DATE	COMMENTS	DRAW	CHKD	APPD
Title NATIONAL GRID (HINKLEY POINT C CONNECTION PROJECT) VOLUME 8.7.3 VERIFIED PHOTOMONTAGE VIEWPOINT VPG11					
 <small>National Grid plc, Warwick Technology Park, Garside Rd, Warwick, CV39 6DA</small>					
NG INVESTMENT No.		APPLICATION No.		IN	
20897		EN020001		A1	
FIGURE No.		DRAWING No.		SCALE	
8.7.3.24		IN1979.82.025.001B		NTS	
SHEET 1 OF 1					ISSUE
					A